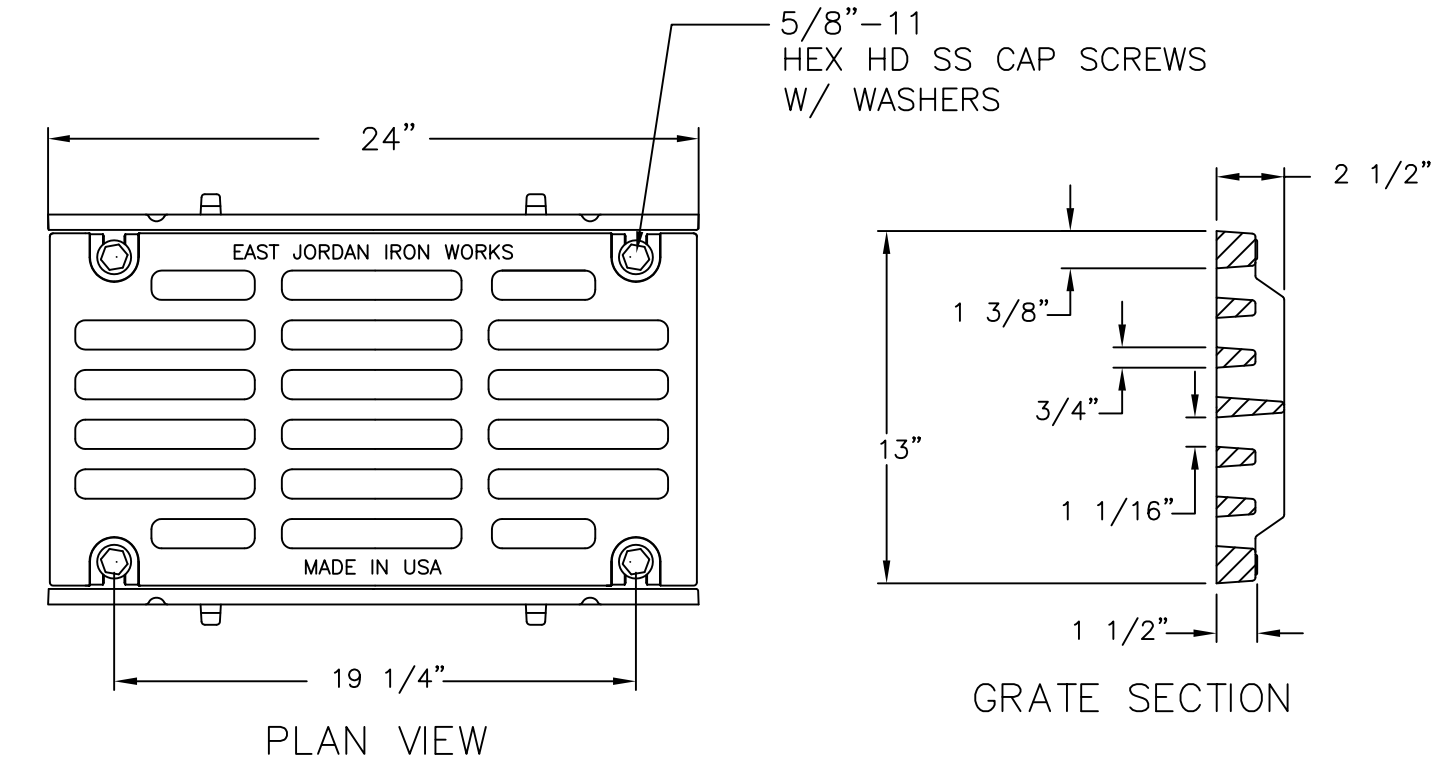
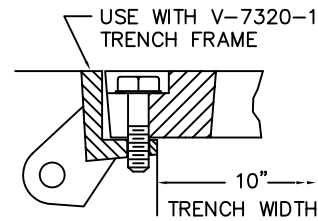
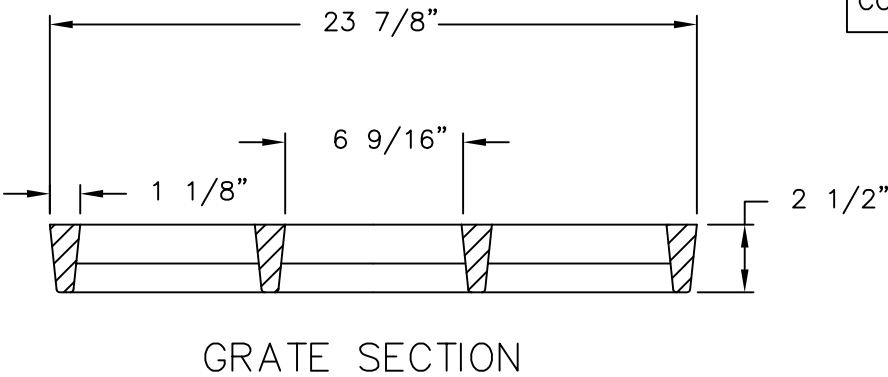


V7320-1 V7363 Assembly



CAUTION: DO NOT DISASSEMBLE BOLTED GRATES BEFORE SETTING SECTIONS IN CONCRETE



Product Number
47363061

Design Features

- Materials
 - Trench Rail
 - Gray Iron (CL35)
 - Trench Grate
 - Gray Iron (CL35)
- Design Load
 - Heavy Duty
- Open Area
 - 135 SQ. IN.
- Coating
 - Undipped
- √ Designates Machined Surface

Certification

- ASTM A48
-
-
- Country of Origin:USA

Major Components

47320110
47363030

Drawing Revision

04/23/2004 Designer: DEW
04/09/2012 Revised By: SDC

Disclaimer

Weights (lbs./kg) dimensions (inches/mm) and drawings provided for your guidance. We reserve the right to modify specifications without prior notice.

CONFIDENTIAL: This drawing is the property of EJ GROUP, Inc., and embodies confidential information, registered marks, patents, trade secret information, and/or know how that is the property of EJ GROUP, Inc. Copyright © 2011 EJ GROUP, Inc. All rights reserved.

Contact

800 626 4653
ejco.com